

Fall 2000

HOTLINE

FALL MEETING — OCTOBER 19, 2000 AT 7:30 PM

WEST LAUREL COMMUNITY BUILDING

Meeting Topics: MAGLEV & Zoning Issues

GENERAL MEETING TOPICS

The October meeting promises to be very interesting. Living next to I-95 and in the path of the ICC has made this community sensitive to big transportation projects. This fall will see one of five states selected as the recipient of federal grants to build a \$3 billion high-speed train called MAGLEV (see details further in this issue of the HOTLINE). One proposal would take this train, its construction and daily noise right down I-95. Parts of our community would be impacted by the noise, which is said to be as loud as a jet plane! The WLCA board has invited the MAGLEV project manager to the October 19th meeting as our guest speaker. We hope you will come, listen and give your opinion on the issue and impacts to West Laurel. In addition, we'll also hear about zoning issues that could impact on West Laurel (see Glenelg article). We look forward to seeing YOU at the meeting! ❖

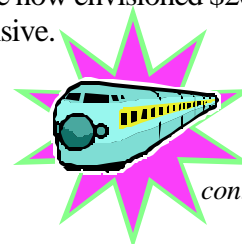
MAGLEV FOR US?

You have probably read about the proposed Maglev project linking Baltimore and Washington. "Maglev", or "Magnetic Levitation", is a technology that enables train-like vehicles to travel at least 240 mph, using magnetic forces to hover over and propel above track-like guides. It has been under development for 20 years, mainly in Germany, where they have opted to not build a commercial

version due to costs. To explore the Maglev concept for the US, our federal government will help financially support constructing a prototype, and several areas are competing, with Baltimore-Washington a strong contender.

Plans for this Maglev line are to run from Baltimore (Camden yards area) to DC (Union Station), with one intermediary stop (BWI airport). It would take under 20 minutes from Baltimore to Washington, with a brief BWI stop. However, how frequently the trains would run remains to be decided. The public/private partnership putting together this proposal hopes to eventually expand the route, from Boston to Raleigh.

This proposed Maglev would not stop in Prince George's county, neither in Laurel nor at the Beltway or Metro Purple Line route. Such stops would be sensible if Maglev were substantially for commuter transportation. However, any such a second stop would prevent the train from reaching the 240 mph required to secure federal funds. Furthermore, this Maglev is envisioned mainly for tourists, well-off businessmen, and residents heading to BWI from downtown, not for average commuters, for whom the now envisioned \$26 one way fare would be very expensive.



continued on page 2

CONTENTS

Meeting Topics	1/2	WLCA Budget	6
Protecting our Water Source	2	Board Members	7
Environmental/Community Concerns	3/5	Teen Service Directory/WLRC	8
Neighborhood Watch	4	Membership	9

Next Meeting — October 19, 2000

PROTECTING OUR WATER SOURCE

continued from page 1

Concerning funding, construction of the 40 mile route is estimated at slightly over three and a half billion dollars! Nearly one billion of that would come from your federal taxes, and half a billion dollars are planned to come from your state taxes and from still to be determined local taxes. Bonds and corporate sponsorship are envisioned to finance the remaining slightly over two billion dollars.

Of great interest to West Laurel residents is the proposed route. This has not yet been finalized, but one strong contender is along I-95, i.e., through the eastern portion of West Laurel. A related very important issue is noise. It is estimated to generate slightly over 90 decibels when running through the West Laurel area, somewhat less than a plane taking off. If I-95 generates 80 decibels, this is 10 times more. Furthermore, depending on how high above ground the tracks are positioned to avoid the cars, the noise may not be substantially damped by trees and thus travel quite far. ❖

WILL HOWARD COUNTY POLLUTE OUR DRINKING WATER?

The septic field of Glenelg High School (central Howard County) is failing, and yet the County School Board wants to expand the size of the school. Initially, the School Board received approval from the Maryland Department of the Environment (MDE) to build a small sewage treatment plant to pump the treated wastewater to the Middle Patuxent River. The Middle Patuxent joins the Patuxent River south of Laurel.

However, residents living along the Middle Patuxent vocally opposed this proposal, causing the School Board to decide to seek MDE approval to discharge the treated wastewater into a stream that leads directly into the quite pristine WSSC reservoir system. 750,000 Prince George's and Montgomery County residents receive their drinking water from the WSSC system. Councilman Maloney and WSSC General Manager John Griffin (as well as the WLCA) objected to the revised proposal; however, the Howard County School Board ignored these objec-

tions. Our Senator and Delegates have registered opposition with MDE.

WSSC has argued that it is a well-established principle that public health protection begins with protecting your drinking water source. Additional steps to treat water cannot completely substitute for source protection. Intentionally increasing wastewater discharges into the water source is contrary to this principle. Since the reservoirs are a non-free-flowing system, there is a greater concern with discharges, because it is easier for nutrients and contaminants to build-up. Phosphorus loading to the WSSC reservoir system already exceeds maximum allowable levels. Nutrient reductions, rather than increases, are needed for long-term protection and enhancement of water quality.

Water source protection has become even more important after the discovery of previously unknown contaminants in water, including disinfection by-products (carcinogens resulting from chlorination or ozonation of organic matter in water), giardia (a chlorine-resistant pathogen), and cryptosporidium (another chlorine-resistant pathogen responsible for over 100 deaths in Milwaukee in 1993). Research is under way on the potential presence and health impacts of other contaminants, such as pharmaceuticals in wastewater discharges and additional disinfectant-resistant pathogens and disinfection by-products.

At the present, the Howard County School System has not filed its application with MDE. The WLCA is monitoring the situation, and filed public information requests with the school system. We are in the process of reviewing the documents and are considering legal action should the school system continue with its plans. Fortunately, the School System has issued a new capital budget, which proposes construction of a new western high school instead of the expansion of Glenelg High School. If this new high school is approved, the wastewater treatment plant may be unnecessary. We will provide a complete update at the Fall Meeting. ❖

ENVIRONMENTAL CONCERNS

GYPSEY MOTH MAY BE BACK

Ten years ago, West Laurel was hit hard with an infestation of gypsy moths. Now they may be back. What's a gypsy moth? It's a pest that eats the foliage off oaks and other hardwoods. The WLCA website has lots of good information about the moth, how to spot it and report it. The URL is:

<http://www.webtrek.com/md/westlaurel/environment.htm>

Some neighbors reported seeing the moth this summer. The State inspected Bradford Place and surrounding wooded areas in early September and found no trace of the moth. That does not mean they were not there. The community needs to be extra watchful for signs of the moth in the spring and summer. Last time around, the problem was resolved with aerial spraying. Most likely, that method would be used again. There is a cost associated with spraying. Much of the WLCA budget is kept in reserve to fight issues like the gypsy moth. However, we look to the community to maintain that budget with dues to the WLCA. Our membership has dwindled while our population and costs have gone up. The WLCA would like to print more information in this newsletter, but budget overruns have caused the Board to limit how much can be put in the HOTLINE. We'll have lots of material for you to look over at the general meeting. If you have any questions about the gypsy moths, please call **John Dollen at 301.725.3202**. ❖

WEST NILE VIRUS IN OUR BACKYARD

West Nile Virus, the mosquito-borne illness that for the second year in a row has sickened people and killed hundreds of birds in New England and the Mid-Atlantic states, has now been found in Maryland. Two dead crows – one found September 15th in Columbia, the other September 13th in Relay, Baltimore County – have tested positive for the presence of the virus. A third crow that also tested positive was found in Baltimore City. Many more birds are being checked daily. So far no human cases have been found in Maryland. The state conducted emergency spraying around the intersection of Routes 29 and 32 in Howard County and the intersection of Route 1 and Interstate 195 in Howard and Baltimore counties.

West Laurel residents are urged to get rid of potential mosquito breeding grounds by emptying water from such things as planters and backed-up rain gutters. It is also recommended that people wear long-sleeve shirts and pants and use insect repellent when outdoors in mosquito infected areas. The upcoming cooler weather will lessen the mosquito population. ❖

COMMUNITY CLEANUP LABELED A SUCCESS!

This year's partnership with the Prince George's Comprehensive Community Cleanup Program was a success, a compliment to the voluntary active participation of our community, showcasing West Laurel's preservation of and pride in its community. WLCA thanks Cub Scout Pack 1673 for its continued support.

The Comprehensive Cleanup kicked-off with a Household Hazardous Waste Cleanup netting a total of 770 cars with:

- 274 Car Batteries
- 24 55-gallon drums of Motor Oil
- 3 55-gallon drums of antifreeze
- 6 55-gallon drums of Latex paint
- 14 55-gallon drums of waste flammable paint
- 234 55-gallon drums of waste flammable liquid
- 58 55-gallon drums of Pesticides
- 16 55-gallon drums of Corrosive Liquids

The Comprehensive Cleanup concluded with a Bulky Trash Cleanup netting 30 TONS! The Tree-Trimming segment, which began during the Comprehensive Cleanup, will conclude mid-October. Those wishing to discard bulky trash may call 301.952.7600 to schedule a pick-up. Leaf collection, which operates Fridays from April through January and does not require scheduling, collects leaves contained in trash bags placed curbside.

WLCA Environmental Committee Chair Justin W. Chappell will focus next year's Environmental Cleanup on a regional partnership scheduled on a Saturday in April or May. Suggestions should be sent to **Justin Chappell at 301.802.7720**. ❖

NEIGHBORHOOD WATCH

NEIGHBORHOOD WATCH

West Laurel is statistically one of the safest areas to live in Prince George's and Montgomery Counties. However, no community is free from crime. This fall a neighbor was sexually assaulted in her home. It is very shocking when something like that happens close to home. It should show us that no area is free from crime. You should always lock your doors and never let strangers into your home!

West Laurel has had an active neighborhood watch for several years. If you have crime issues, please notify your neighborhood watch at 301.725.3202. One of their key charges is to track and monitor crime in the neighborhood. Police rotate frequently so the community needs to keep the long-term picture of crime in the area.

Since February of this year, we have experienced a continuous string of "smash-and-grab" activities in West Laurel (e.g., car windows are broken and items are taken from the cars). There have been nearly 20 cars involved to date. The police have little or no information to go on. We need your help to stop this crime and others. If you see anyone looking into car windows, please call the police at 911. You can follow-up with a call to **Kelly Krause, West Laurel Neighborhood Watch (301) 725-8216 or John Dollen (301) 725-3202.**

A crime news table will be set up at the general meeting. The police and neighborhood watch will be on hand to discuss crime issues. Lots of good literature will be on hand. ❖

VOLUNTEERS NEEDED FOR HALLOWEEN

Last Halloween, there was an unfortunate incident, in area II, where some young children were knocked down and had their candy stolen by older teens. The neighborhood watch is organizing volunteers to patrol the neighborhood to help keep kids safe. If you are interested in giving an hour or two of your time to help with foot patrol or car patrol, please contact **Kelly Krause (301) 725-8216 or John Dollen (301) 725-3202.** Volunteers will be contacted regarding the details of this activity. A volunteer list and more information will be available at the general meeting. ❖

REPORTED CRIME STATS

Here is the "reported crime" for West Laurel since May 2000 (provided by District 6 County Prince George's County Police):

05/03	Theft	Sweitzer/Sandy Sp. Rd
05/07	Assault	6400 Darwin
05/13	Vandalism	15810 Kerr Rd
05/16	Theft from Auto	15800 Joyce La
06/04	Theft from Auto	6000 Sandy Spring Rd
06/07	Theft from Auto	7200 Brooklyn Bridge Rd
06/15	Theft	6400 Sandy St
06/17	Theft from Auto	6600 McCahill Dr
07/04	Vandalism	6700 Park Hall Dr
07/04	Vandalism	6700 Park Hall Dr
07/11	Found Property	6200 Kaybro
07/19	Assault	15600 Bradford Dr
07/20	Animal Bite	15500 Park Hall Ct
08/05	Vandalism	15400 Bauer La
08/05	Vandalism	5800 Parkway Dr
08/05	Vandalism	15720 Ashland Dr
08/06	Vandalism	5800 Parkway Dr
08/06	Vandalism	5900 Windham Rd
08/15	Vandalism	16000 Sherwood Ave
08/17	Vandalism	16200 Canfield Dr
08/18	Phone Harassment	15700 Bond Mill Rd
08/22	Burglary	16000 Kerr Rd
8/23	Theft	6400 Old Sandy Spring
09/11	Fraud	15300 Bauer La
09/13	Sexual Assault	5900 Parkway Dr
09/13	Burglary	16600 Brooklyn Br. Ct
09/14	Burglary	7010 Redmiles Rd

SUMMARY OF BOARD ACTIVITIES

CSI cuts and its impact on Bond Mill, neighborhood crime, speed awareness day, DIGEX at Trammel Crow, WLRC activities, volunteers for the Main Street Festival, volunteers for the Laurel 4th of July, recycling, litter at T. Howard Duckett, A-9944, CB-8-2000, Sandy Springs Estates, Kenilworth Extended, Commission 2000, comprehensive community clean up, budget, newsletter planning, gypsy moth, county landfill, newsletter planning, zoning enforcement, Pines of Laurel, Glenelg, Maglev, WSSC improvement, improvements to neighborhood park #2. ❖

COMMUNITY CONCERNS

ROUTE 201 (KENILWORTH AVENUE)

State Highway Administration engineers are considering five alternates for relieving congestion along the U.S. 1/MD Rte. 201 (Kenilworth Avenue) corridor – including one involving the realignment and expansion of Van Dusen and Virginia Manor Roads from Muirkirk Road to MD Rte. 198 – but project coordinator Monty Rahman said SHA will likely end up “mixing and matching” the various alternates to create a hybrid plan.

Rahman made those comments at a Sept. 21 meeting in which SHA staff briefed a citizen focus group that is offering input on the project. The West Laurel Civic Association is participating in the focus group; Mary Lehman, backed up by Bill Ferguson and Barbara Sollner-Webb, will monitor the project and inform the WLCA board of any developments. On Sept. 28, as the Hotline was going to press, SHA was scheduled to hold a workshop to introduce the alternates to the public and solicit feedback. The alternates include:

- No-build: Minor intersection and re-surfacing improvements.
- TSM/TDM: Intersection and mass transit improvements but no new travel lanes or roadways.
- U.S. 1 widening: Widen Rte. 1 to six lanes from Sunnyside Avenue to Rte. 198, improve intersections on Rtes. 1 and 201, and improve bicycle and pedestrian access on Rte. 1.
- MD 201 widening/Virginia Manor realigned: Widen Rte. 201 to four lanes from Sunnyside Avenue to Odell Road, build a new four-lane road from Rte. 201 over to Ritz Way and Virginia Manor Road, plus realign and widen to four lanes Virginia Manor and Van Dusen Roads from Muirkirk Road to Rte. 198, and add bicycle and pedestrian facilities on improved roadways.
- MD 201 widening/extension to Contee Road: Widen Rte. 201 to four lanes from Sunnyside Avenue to Muirkirk Road, build new four-lane road linking Muirkirk to Contee Road, improve major intersections on Rtes. 1 and 201, provide bicycle and pedestrian facilities on Rte. 201, and provide new transit service along the new roads.

Rahman conceded that not eliminating some of the alternates following a public workshop is unusual, but he explained that the study area is unique because of its “corridor” status. The overall goal is to relieve traffic congestion, but the project team must also weigh the impacts on economic development (i.e., access to businesses located along the corridor), the environment (prime agricultural lands, large wetlands and floodplains, and watersheds associated with the Patuxent and Anacostia Rivers), and various cultural resources (churches and undiscovered archaeological resources, for which there is a high potential, according to the Maryland Historical Trust).

While the project is included in the Maryland DOT Consolidated Transportation Program, funding has only been allocated for project planning. No additional funding has been made available for final design, right-of-way acquisition or construction. Even if the remaining planning, public hearing and design processes go smoothly and funds are allocated, Rahman admitted construction could be eight to 10 years away.

Questions can be directed to **Monty Rahman at 800-548-5026** or by e-mail at trahman@sha.state.md.us. ❖

THE VALUE OF A QUALITY NEIGHBORHOOD SCHOOL

The Superintendent of Schools greatly reduced certain County funding (CSI Funds) for many schools in the Laurel area, including Bond Mill Elementary School. The WLCA has expended some of its time and effort in addressing this situation. We do not believe that this issue is solely the province of the PTA's and the education activists. We believe that all residents, regardless of whether they have children in the public school system, should be concerned about the quality of local schools. In many respects, communities are perceived in light of the quality of their neighborhood schools and this perception is reflected in property values. West Laurel has benefited from its association with Bond Mill (and vice-versa). Consequently, we all have a direct interest in Bond Mill's success, and the WLCA will strive to maintain its history of quality - you should too. ❖

WLCA BUDGET

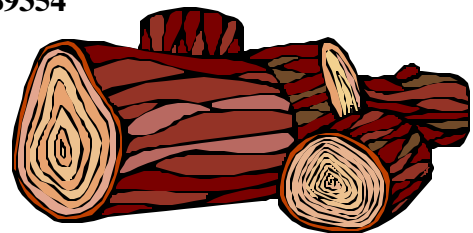
WLCA PROPOSED BUDGET

The 2000 - 2001 WLCA Budget will be voted on at the Fall Meeting. Please read the information below and bring any questions or comments to the Fall General Meeting. WLCA has generally kept a balanced budget, but it has been hard with a fluctuating number of members. We need 450 residences to balance this year's budget, but more members would help in some of the big issues coming up. We're proud to be one of the largest civic associations in the County, and having that stature is an effective tool in certain forums. Please join WLCA and support your community. ❖

WLCA Proposed Budget 2000 – 2001

	Approved 99 - 2000	Actual 99 - 2000	Proposed 2000 - 01
Hotline Issues	2600	3091	2800
P. O. Box	64	64	64
P. O. Permit & Fee	185	100	100
Cub Scout Sponsorship	300	300	300
Fire Dept. Donation	150	150	150
Rescue Squad Donation	150	150	150
Grad Night Donation	100	100	100
W L Rag Tag Band	100	100	100
Bond Mill PTA Carnival	75	75	75
Civic Ass'n Dues	75	75	75
Office Supplies	100	57	75
Zoning and Legal Fees	200	0	150
Refreshments	150	212	150
Misc Expenses	<u>200</u>	<u>260</u>	<u>200</u>
Total	4449	4734	4489

Income Years	Members	Dues	Total
1998 – 1999	457	@10.00	\$4570
1999 - 2000	425	@10.00	\$4250
Estimated Income for 2000/2001	450	@10.00	\$4500
Checkbook Balance 9/1/2000		@10.00	\$9354



ZONING ORDINANCE MESSAGE FOR WEST LAUREL

Did you know that woodpiles and brush stacked on the ground are illegal if not on a permanent surface? Many people in West Laurel store wood or branches on their property. Few of us realize that there is a county ordinance which states how this material can be stored. Sec 12-161 states that the wood must be stored 6 inches above a weed free surface unless it is placed on a permanent surface such as a driveway. The reason this ordinance requires this is to avoid a habitat that harbors rodents - RATS! Please help keep our community beautiful and healthy.

BOARD MEMBERS

2000-2001 West Laurel Civic Association Board Phone Numbers

WLCA OFFICERS

<u>WLCA OFFICERS</u>	<u>NAME</u>	<u>NUMBER</u>	<u>E-MAIL</u>
President	John Dollen	725-3202	dollenj@hotmail.com
1 st . Vice President	Tom Dernoga	490-3286	tedzone@digizen.net
2 nd . Vice President	Barbara Sollner-Webb	604-5619	bsw@jhmi.edu
Rec. Secretary	Mary Lehman	498-0694	dalehma0@aol.com
Treasurer	Laurice Crawford	490-8684	gordonanderson@compuserve.com

AREA I REPS.

Rep. (2yr)	Jurgen von Bredow	549-3150	
Rep. (1 yr)	Don Hopkins	549-1951	gramhop@aol.com
Alternate	Jim Ludlam	483-9855	ludlamj@erols.com

AREA II REPS.

Rep. (2 yr)	Justin Chappell	470-1655	wiz@erols.com
Rep. (1 yr)	Bill Ferguson	776-6993	retired00@juno.com
Alternate	Richard Weiblinger	490-8686	rpw@cdrh.fda.gov

AREA III REPS.

Rep. (2 yr)	Howard Rosenberg	776-4228	hrmkr@earthlink.net
Rep. (1 yr)	Ron Holmberg	604-7598	holmberg@erols.com
Alternate	Gordon Anderson	490-8684	gordonanderson@compuserve.com

AREA IV REPS.

Rep. (2yr)	Irene D'Amato	490-8441	irened@prodigy.net
Rep. (1 yr)	Lucy Grimes	490-0414	egrimes32@earthlink.net
Alternate	Barney Walsh	490-7357	walshcebs@aol.com

AREA V REPS.

Rep. (2 yr)	Meg Truman	549-3514	perfect.touch@juno.com
Rep. (1 yr)	Bob Kline	776-3687	
Alternate	Carol Bounds	725-6012	seanachie@erols.com

ZONING

Tom Dernoga	490-3286	tedzone@digizen.net
--------------------	----------	---------------------

ICC

Barbara Sollner-Webb	604-5619	bsw@jhmi.edu
-----------------------------	----------	--------------

ENVIRONMENTAL

Justin Chappell	470-1655	wiz@erols.com
------------------------	----------	---------------

HOTLINE COORDINATOR

Ron Holmberg	604-7598	holmberg@erols.com
---------------------	----------	--------------------

WLRC OFFICERS

President	Kim Passmore	725-3157
-----------	---------------------	----------

WL COMMUNITY CENTER

Deedee Sisson	953-2199
----------------------	----------

LAUREL LEADER COLUMNIST

Chris Folks	490-0797	cbfolkswl@aol.com
--------------------	----------	-------------------

Board Meetings are held monthly, usually on the second Thursday, at the Community Center at 7:30 p.m.
General Meetings will be held in October, February and May, usually on the third Thursday of the month, at the Community Center at 7:30 p.m.

TEEN SERVICE DIRECTORY

HELP OUR TEENS

Help a teenager learn responsibility and be productive, all while earning money. The WLCA has received parental approval to make the following names and phone numbers available.

- **Nicole Ashby**

(Baby Sitting, House Sitting)

- **April Atkinson or Jo Anna Atkinson**

(Baby Sitting, House Sitting)

- **Matthew Bryan**

(Lawn ,Gutters, Baby Sitting)

- **Sarah Criscuolo**

(Baby Sitting)

- **Jason Folks aka "Amazin Jason"**

(Inexpensive Magicshows - Children's Parties)

- **Nanete Kearns**

(Baby Pet & House Sitting)

- **Laura Kimes**

(Baby Sitting)

- **Barry Lee-Moran**

(Yard Work, Baby Sitting, Household Chores)

- **Mark Lee, Jr.**

(Yardwork, Painting, Car Washing, Baby Sitting)

- **Michael Ostrander**

(Yard Work, Painting, Car Wash, Baby Sitting)

- **Charles Ostrander**

(Automotive Detailing)

- **Courtney Simmons**

(Baby Sitting, House Sitting)



- **Jill Whitman**

(Baby Sitting)

- **Steven Whitman**

(Yard Work, Baby Sitting)

If you have a teenager interested in providing services in the neighborhood, call **WLCA President John Dollen (301) 725-3202**. The next directory will be published in the Winter of 2001. ❖

WEST LAUREL RECREATION COUNCIL

Community Holiday Party will be held in West Laurel Community Building on Friday, December 8th 7:00 to 9:00 pm. Enjoy a Christmas Sing-along and make crafts and Christmas decorations to take home. Bring a snack to share and a new, unwrapped gift for LARS.

If you have any recommendations for additional educational, recreational, family or social functions, or can volunteer to help with a program, please call the **West Laurel Recreation Council Hotline, 301-725-9572 or Kim Passmore 301-725-3157**. On the web at [www.webtrek.com\laurel\org\wlrc](http://www.webtrek.com/laurel/org/wlrc) or you can call M-NCPPC Region 1 office @ 301-953-2199

Feel free to drop in to any of the monthly meetings, 4th Tuesday of the month. The meetings are held at the West Laurel Community Building and start at 7:30 pm. ❖

LEAF COLLECTION AND GUIDLINES

The Department of Public Works (DPW) will be collecting leaves from West Laurel Streets this fall. They recommend that you not put the leaves “in the street” but rather, on the side of the road. Leaves in the street are a hazard. Children inevitably will play in the leaves and that can mean trouble. Leaves piled in the road will blow into the street and that makes a slippery hazard for cars. Leaf collection signs will be posted in area streets to announce when collections will be. For those who want advance intelligence on leaf collection, you may call **301-499-8576** for a recorded message of the collection schedule.❖

MEMBERSHIP

SUPPORT YOUR CIVIC ASSOCIATION

We wish to welcome all our new neighbors and say hello once again to all our old neighbors. This is the beginning of another new year for the West Laurel Civic Association. Our Civic association has a lot to be proud of in protecting our neighborhood to keep it green, beautiful, and safe; trying to keep out industries that will produce major traffic jams in and around our community, i.e. ICC, country music theatre, Redskin Stadium. However, we do need your help by supporting the Civic Association and by becoming a member. We would love to see you at any of our Board meetings and at the General Meetings held 3 times a year.

Mail your check for \$10.00, payable to WLCA, to: **Laurice Crawford, 16300 Gales Court, Laurel, MD 20707** or stop by the table at the **October 19th General Meeting** at the West Laurel Community Center. Thank you for your support. ❖

COMMUNITY CHRISTMAS CAROLING

Bethany Community Church invites all West Laurel residents to join in an evening of Christmas caroling on Sunday afternoon, December 17 at 5 p.m. Carolers will meet at the old barn on the church's property on Riding Stable Road and then stroll through the community. The carolers will end their evening back in the barn for hot chocolate and other refreshments. The church will be moving into their new ministry center on Riding Stable Road early next year. For more information, call **301-725-7838**. ❖



WEST LAUREL HOME PAGE

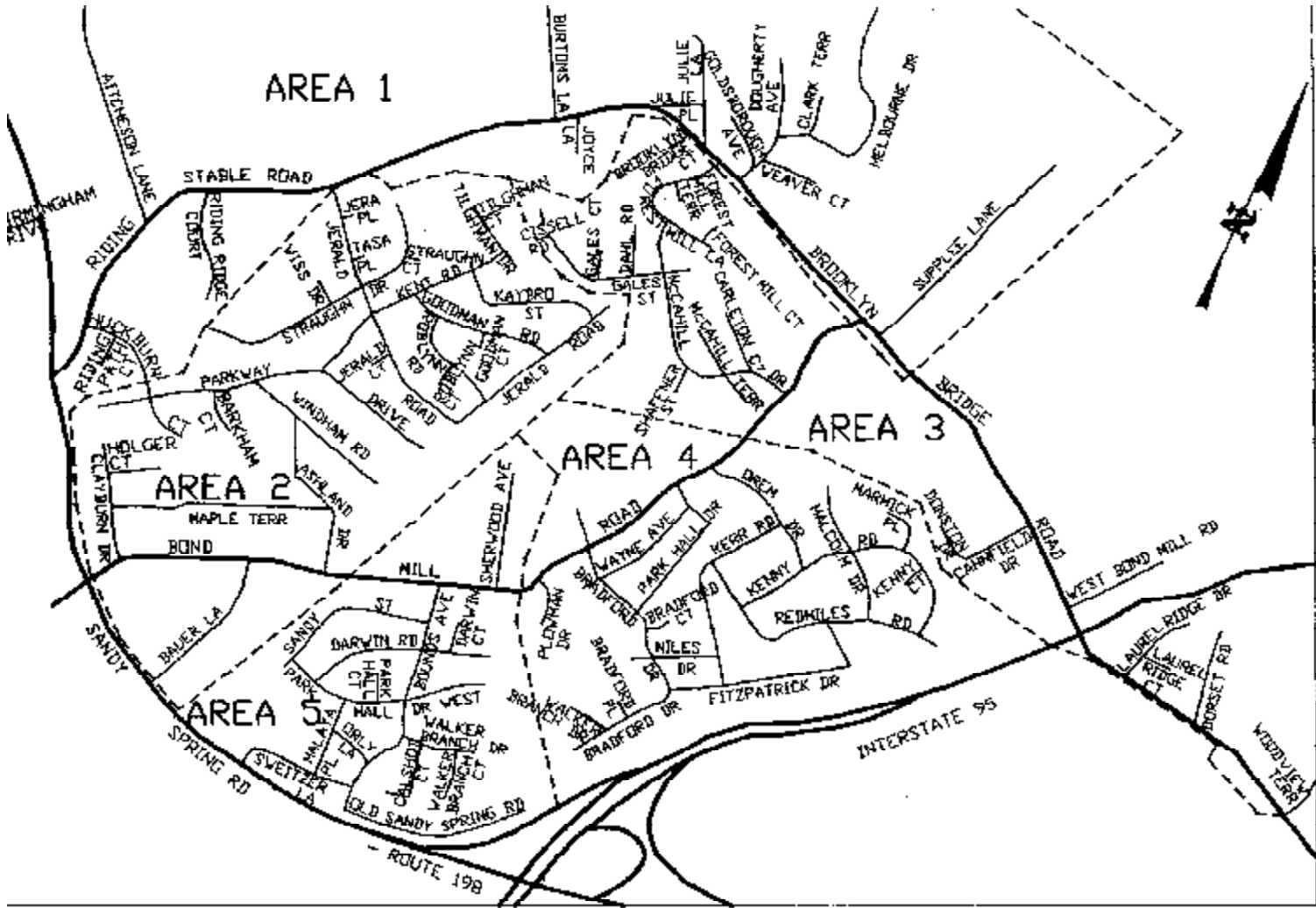
The West Laurel Home page on the World Wide Web is being continually updated and includes many new features. On the Environmental page there are links for West Nile Virus related sites. The calendar page has dates and times for most West Laurel events. If you have an event to include on the calendar page, please contact Webmaster **Ron Holmberg** at **301/604-7598** or **holmberg@erols.com**.

The Website also contains a multitude of hotlinks to government, county, and community pages. The site has links to most of the Montgomery and Prince George's County websites. West Laurel Swim Club and the West Laurel Recreation Council have links or pages on the site. We invite you to take a look at the pages — we welcome your feedback! The URL is **<http://www.webtrek.com/md/westlaurel/index.html>**. ❖

HOTLINE CONTRIBUTORS

Many thanks to those who contributed to this issue of *HOTLINE*: Gordon Anderson, Justin Chappell, Laurice Crawford, Tom Dernoga, John and Cindy Dollen, Ron Holmberg, Mary Lehman, and Barbara Sollner-Webb. ❖

MEMBERSHIP REGISTRATION FORM	
Name:	_____
Address:	_____
Telephone: _____	Dues: \$10.00
Comments:	_____



The Newsletter of the West Laurel Civic Association

HOTLINE — Fall 2000

Bulk Rate
Postage Paid
Permit #3505
Laurel, MD 20725

West Laurel Civic Association
P.O. Box 449
Laurel, MD 20725