

Spring 2000

HOTLINE

SPRING MEETING — MAY 18, 2000 AT 7:30 PM

WEST LAUREL COMMUNITY BUILDING

Meeting Topics: West Nile Virus & 21st District Legislative Review

GENERAL MEETING TOPICS

From time to time, people comment that the WLCA Board is only interested in land use issues and opposes everything. That's just not true. The Board has a charter to protect the quality of life for West Laurel, which requires looking at a variety of issues, including land use, and being consistent on its stand.

In case you run into someone who has such an opinion, you might want to hold on to this issue of the HOTLINE so you can show him/her what your civic association does for your community. Your WLCA Board is dedicated to protecting our current quality of life so it will be there for generations to come.

To that end, the Board has invited guest speakers from the Department of Agriculture and Prince George's County Health Department to speak to us regarding the "West Nile Virus." Health officials along the eastern seaboard are watching this virus closely because it presents a potential threat to people – especially elderly and youth. Our guests will address activities in the region to identify the virus and what we need to be concerned with at this point. Since our community may be at risk, the Board wants you to know the facts and what you can do to reduce your risk. For full details, see the Nile Virus article in this addition of the HOTLINE.

In addition, we will hear from the 21st Delegation regarding legislation passed by the General Assembly. We hope to see you at this meeting. ❖

COMPREHENSIVE COMMUNITY CLEANUP PLANNED FOR JUNE

The WLCA Board is pleased to bring you three distinct activities to help keep West Laurel beautiful.

1. **WLCA's Annual Environmental Cleanup Day:** June 11 from 11 AM – 1 PM at the West Laurel Community Center. Local volunteers will be organized to clean up parts of the Walker Branch Tributary. For information or to volunteer, contact **Justin Chappell** at (301) 470-1655 or wiz@erols.com.

2. **Hazardous Material Collection:** Prince George's County has arranged to have hazardous material collected at the West Laurel Community Building from 10 AM to 4 PM on June 11.

3. **Comprehensive Community Cleanup Program:** June 5-23. This program, sponsored by the Prince George's County Department of Environmental Resources (DER), is designed to revitalize, enhance, and help maintain unincorporated areas of the County. It is offered to communities like West Laurel every four to five years.

continued on page 2



CONTENTS

Community Cleanup	1/2
West Nile Virus	3/4
WLCA Board at Work	4/5/9
Community News	6/9

West Laurel Recreation Council	7
Neighborhood Watch	8
Teen Service Directory/Bylaw Change	10
Useful Numbers	11

Next Meeting — May 18, 2000

COMMUNITY CLEANUP

continued from page 1

Activities will take place in two phases:

- **Phase I (June 5-16):** Residences west of Bond Mill Road and the BG&E power lines.
- **Phase II (June 12-23):** Residences along Bond Mill Road and east of the BG&E power lines.

As part of the June 5-23 comprehensive community cleanup, the County DER and Department of Public Works and Transportation (DPW&T) will provide the following services. Please contact **Justin Chappell (301) 470-1655** or **wiz@erols.com** or your area representative with any areas of concern prior to June 5.

TAGGING AND TOWING ABANDONED VEHICLES

The DER's Vehicle Audit Unit will tag all abandoned vehicles on public streets. An abandoned vehicle is one that is obviously not operable or does not display current tags. Tagged vehicles not brought into compliance within 48 hours will be towed.

BULKY TRASH COLLECTION

The DER's Waste Management Division will perform curbside collection of large items not normally collected by the regular trash contractor such as furniture, appliances, and tree limbs and firewood.

TREE TRIMMING

The Department of Public Works and Transportation's (DPW&T) Office of Highway Management will conduct a preliminary survey of trees along the public right-of-way. Based on their inspection and in conformance with guidelines, tree limbs will be trimmed and removed.

ROADSIDE LITTER COLLECTION

The DPW&T's Office of Highway Maintenance will pick up litter along West Laurel roads.

STORM DRAIN MAINTENANCE

The DPW&T's Office of Highway Maintenance will inspect and repair storm drains.

STORM DRAIN WATER QUALITY TESTING

The DER's Programs and Planning Division will check storm drain systems for water pollution and illegal discharge.



HOUSING CODE INSPECTIONS

The DER's Community Standards Division will perform Housing Code Inspections. Problem areas should be brought to the attention of the WLCA to help direct activities of the DER. Property owners will be given 30 days to comply. After 30 days, the County will issue a court order to ensure compliance after 30 days. Violations of interest include:

- Exterior property used to store trash, debris, furniture, appliances, tires, or building materials;
- Flaking or peeling paint;
- High grass and weeds (over 12" tall);
- Excess or old unusable firewood stored on the ground;
- Fence, roof, shed, swimming pool, porch, or steps in disrepair; and
- Motor vehicles with expired tags.

YOUR HELP IS CRITICAL

This comprehensive program is dependent on community participation. Residents should inform WLCA of areas that need attention. A large-scale map will be on display at the May 18 meeting. The WLCA Environmental Chairman, Justin Chappell, will be available at a table in the small room to take your questions and discuss details of the cleanup activities. Also available will be a DER flyer with a cleanup calendar of events and information pertaining to the cleanup activities. ❖

WEST NILE VIRUS

PREPARING FOR THE WEST NILE VIRUS

Last summer, the West Nile Virus caused the deaths of seven people in New York City. A total of 62 people were diagnosed with the virus, and health officials believe many other infections went undetected.



Why should residents of West Laurel care about this virus? Because the elements of risk are present in our community. The WLCA Board met with a known expert on the subject, and considers the West Nile Virus a “possible” health threat to our community. This article is not intended to cause alarm, but rather to inform the community of facts surrounding this issue, including what can be — and what is being — done.

Please join us at the general meeting, where two guest speakers will be available to answer your questions about the virus and to address what the community can do in the event this potential health threat becomes reality.



FACTS

- **Infected birds maintain the virus.** Certain types of mosquitoes can become infected with the virus when they feed on infected birds. Infected mosquitoes then transmit the virus to other birds and, occasionally, to humans. At least one type of mosquito that is capable of transmitting the virus is present in West Laurel. Humans do not directly transmit the virus to each other.
- **Birds can spread the virus over large areas as they migrate.** Last year, a dead crow in Baltimore City was found to have the West Nile Virus. Although no other infected birds have been found in Maryland since last year, mosquitoes could have contracted the virus from this or other birds in our area.
- **The virus can be deadly to horses and humans.** Our children and seniors are at greatest risk. Fatality rates range from 3 to 15 percent among those who become seriously ill with the disease and are highest among the elderly. Many infections are mild and go undiagnosed.



- **Some infected mosquitoes survived the winter.** This winter health officials in New York have found hibernating mosquitoes that are infected with the virus. This is cause for concern to health officials along the eastern seaboard, and they are watching the situation carefully.
- **The summer months will soon be upon us.** Mosquitoes will be coming out in numbers. We need to understand and prepare now rather than later.
- **The West Nile Virus is new to the Western Hemisphere.** Last year was the first time the virus was found in the Western Hemisphere. Public knowledge regarding this virus is low. Health experts are concerned that the virus will spread over large areas over time. The virus is well established in Africa, West Asia and the Middle East.



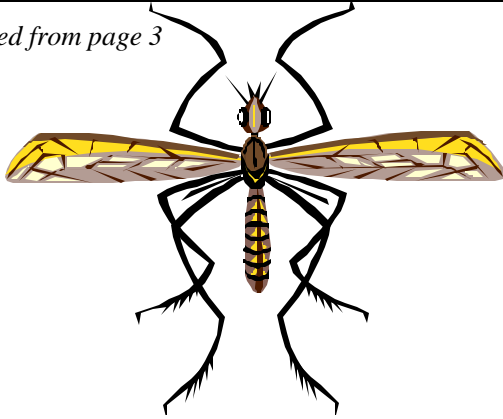
COMMON QUESTIONS AND ANSWERS

- **How does the virus cause death in a human?** When the virus multiplies in a person’s bloodstream and crosses the blood-brain barrier to reach the brain, it may result in inflammation of brain tissue and interfere with central nervous system functioning. This condition is called encephalitis – hence, the disease is called West Nile Encephalitis.
- **What are the symptoms of the virus?** A person may initially experience flu-like symptoms (*e.g.*, ache, fever, chills, etc). In severe cases, which are life-threatening, symptoms can include disorientation, high fever, coma, tremors, convulsions, muscle weakness and paralysis. The incubation period is 5-15 days.
- **Is there a vaccine for the West Nile virus?** No.
- **Can people develop natural immunity to the virus?** Immunity to some types of viral encephalitis develops after infection.
- **What is the treatment for the virus?** There is no specific treatment. If you feel ill, seek medical treatment immediately. In severe cases of infection, hospitalization with intravenous fluids, airway management, etc. is required.

continued on page 4

WEST NILE VIRUS CONTINUED

continued from page 3



- **When is mosquito season?** In our area, the season is early summer to early fall.
- **What defense can one take against mosquitoes?** There is no absolute defense against mosquito attack. The best defense is to stay indoors at dawn and dusk and to ensure that your house is secure and free from open passage to the outside that would allow mosquitoes to enter your home. If you go out, wear long-sleeve shirts and pants, avoid wearing dark colors and use insect repellent (ages 3 and older only). To help reduce mosquito habitat and lower your risk and remove standing in containers, tarps, old tires, tire swings, etc. Poorly draining gutters should be repaired and water in pet dishes should be changed daily. Water in birdbaths should be changed several times a week.
- **What do I do if I find a dead bird?** Don't touch the dead bird; if the cause of death is not evident, **call health officials at 1-888-584-3110**, especially if you find a dead crow.
- **Are crows the only birds which carry/die from the virus?** Domestic geese have died from the virus.
- **What are the State and County doing to detect the virus in our area?** Art Thacher (West Laurel resident and Health Officer for Prince George's County) said the virus is something a community should be aware of and prepared for; however, it's too early to tell at this stage if there will be problems in our area. State officials will monitor for the virus by testing dead birds, catching/testing mosquitoes, and using a statewide surveillance of sentinel chickens to see if they show signs of infection.

- **What can the WLCA to prepare/protect the community?** In years past, the WLCA has sprayed for gypsy moths to save the community's oak trees; much of the WLCA budget reserve is kept to respond to that threat should it occur again in the future. If mosquitoes become a problem due to the virus, this reserve could be tapped to spray the community. The cost of spraying is split between the County (25%), the State (50%), and the community (25%). For West Laurel, the community's share of the cost could range from \$250 to \$500 per season, an average of 20¢ per household. However, only 25 percent of West Laurel residents pay dues to support the WLCA. In actuality, dues-paying households would subsidize the rest of the community and the actual cost would be nearly four times higher (75¢ per dues-paying home).
- **Where can I find more information on the West Nile Virus?** The Center for Disease Control and Prevention (CDC) has a website with a plethora of information on this subject. You may access it at http://www.cdc.gov/ncidod/dvbid/arbor/West_Nile_QA.htm ❖

AMENDMENT TO THE BY-LAWS

At the May General Meeting, the WLCA Board will present an amendment to its by-laws to include election of alternates. Per the by-laws, amendments must be submitted to the general membership for consideration and vote. Please attend and cast your vote. See page 10 for text of new bylaws. ❖

BOARD DISCUSSION TOPICS SINCE FEBRUARY 2000

Sandy Spring Estates I & II; Sweitzer Lane construction and road improvements; ICC; crime and neighborhood watch; community cleanup activities; Spencerville Senior Housing; fire near Jerald and fire near ounds; ballfields for Laurel Boys & Girls Club; WLRC activities; WLCA bylaws; Nile Virus; bylaw amendments; Census 2000; Commission 2000; Boy Scout sponsorship; Laurel Fourth of July Committee support; snow and ice removal; and Smith property subdivision. ❖

YOUR WLCA BOARD AT WORK

ICC LAYS A BAD EGG

Montgomery County voters slipped a lump of asphalt in West Laurel's Easter basket recently with the unexpected election of pro-ICC Howard Denis to the Montgomery County Council (replacing the ailing, sensible growth advocate, Betty Ann Krahnke). A combination of rain and political apathy may have prompted the low turnout (fewer than 20 percent of voters made the trip to the polls) which was most likely a factor in the very narrow loss of anti-sprawl candidate, Pat Baptiste.

The ICC (Inter-County Connector) is an east-west super highway designed to link I-95 with route I-270 and the promise of reducing traffic on the Washington DC beltway. The cost-benefit ratio of building new roads must be carefully considered before irreversible damage to the environment and our way of life can be justified. All variations of ICC plans have been carefully reviewed by numerous experts and members of the West Laurel Civic Association. Not one of the plans meets the stated goals of the ICC!

The ICC does meet one unstated goal — that of cutting apart the only undeveloped area between Washington and Baltimore and turning it into unmitigated sprawl, so well illustrated in other areas around Washington. The real benefactors of the ICC would be the developers associated with the Washington Board of Trade and those area real estate developers who bankrolled Howard Denis (according to *The Montgomery Journal*). Denis, a traditional Republican tax cut advocate, supported Democrat Doug Duncan's view of using the proposed tax cut to support super-highways like the ICC. The combined force of Duncan (candidate for Governor of Maryland!) and the newly elected Howard Denis may have a significant negative impact on continued support for the Montgomery County Master Plan and the current stand against an ICC.

Spring foretells times of encouragement and renewal of our commitment to preserve our neighborhood — the only neighborhood of its kind — a treasure worth fighting for! Our efforts should be directed toward carefully monitoring, identifying and supporting the political “good eggs” who will provide reasonable solutions and ensure happy springs for West Laurel for decades to come. ❖

ARE YOU PATRIOTIC?

Most people consider themselves patriotic, but how many people actually do something to make our national Independence Day celebration possible?

The Laurel Fourth of July Committee (LFJC) is always seeking volunteers to help with fundraisers and activities associated with our national Independence Day celebration.

This year's celebration will take place on Saturday, July 1, 2000. Volunteers are needed to help with the following activities:

- Food and drink sales;
- Field setup and activities;
- Fireworks setup team; and
- Parade activities.

Also, the LFJC is holding two fundraisers on May 13. Volunteers are needed to support activities at the Laurel Main Street Festival and/or at the Mother's Day gift-wrap booth in Laurel Mall.

If you feel you can give two hours of your time on May 13 or July 1, please contact LFJC Chairperson **Carol Bounds at (301) 725-6012.**

If time is something you can't spare but money is, please send your donation to Laurel Fourth of July Committee, PO Box 416 Laurel, MD 20725-0416. The LFJC is a non-profit organization. Any donations are tax deductible! ❖



COMMUNITY NEWS

SANDY SPRING ESTATES UPDATE

The proposed subdivision at the end of Sandy Spring Road (in the shadow of the I-95 off ramp) is scheduled for a Planning Board hearing on May 25th; however, it is likely that this hearing will be postponed so that the subdivision may be modified. Recently, the Planning Board Staff identified numerous issues the developer must address before the Staff will recommend approval. Therefore, it is likely that the developer will have to seek a postponement of the hearing. The subdivision proposes 18 lots (mostly half-acre) on 12.7 acres of land. The WLCA is studying major issues such as traffic impact on the Sweitzer Lane intersection and the impact noise from I-95 will have on the homes. The WLCA will continue to monitor this project and provide updates. ❖

NEW IMPACT FEES ON HOUSING GROWTH

HB 1094 resulted in one of the more significant land use/education bills passed by the General Assembly this year. As passed, HB 1094 will impose a school facilities surcharge (*i.e.*, impact fee) of \$5,000 per dwelling unit for new housing construction in Prince George's County. The fee is imposed at the time of issuance of a building permit. Fees collected may only be used for additional or expanded school facilities or to pay the debt service on bonds issued for additional or expanded school facilities.

Not surprisingly, this bill faced intensive lobbying from the home building industry. The bill went through many amendments from the time Delegate Hubbard introduced it until the General Assembly finally approved it at the very end of the legislative session. The final result was to lessen the proposed fee to the \$5,000 figure, and simplify a number of provisions which would have provided exceptions or varied the amount imposed. There was also an effort to have this surcharge replace the adequate public facilities test for schools (*i.e.*, if a school district is too crowded, construction is delayed); however, the approved bill makes the surcharge a set amount which applies in addition to the adequate public facilities test. ❖

ROAD IMPROVEMENTS AT SWEITZER AND ROUTE 198

By now, you've probably seen the road construction near Sweitzer Lane and Route 198. As we have reported in the past, this construction is part of the Governor's improvements prompted by results of ICC studies. How long will we have to put up with the construction and what improvements will we see?

The State Highway Administration expects to have the work completed by the end of July. Improvements associated with this project include:

- Widening of 2000 feet of eastbound Rt. 198;
- Improving the east side of Sweitzer Lane for 1,000 feet;
- Building a third eastbound lane on Rt. 198 (Rt. 198 will merge back to two lanes just east of the I-95 southbound ramp);
- Reconfiguring Sweitzer Lane at Rt. 198 to provide two right-turn lanes and a through left-turn lane; and
- Widening the roadway to provide three northbound lanes for approximately 1000 feet.

The work will include curb and gutter, new drainage structures, new island, saw cutting, carbide grinding and overlay, signal relocation, signing and pavement marking, sediment erosion control, stormwater management facilities, traffic control and utility relocation.

The cost of these improvements comes to over \$800,000. A bus stop will be constructed at a later date, to be located east of the intersection on the south side of the road. ❖

SPENCERVILLE SENIOR HOUSING UPDATE

Since the WLCA General Meeting in February, little has change on this subject. Montgomery County Parks and Planning reported that Dr. Baig has withdrawn his plan for the senior housing development. However, he said that he may refile a smaller concept at a later date. Thus far, nothing has been filed. Dr. Baig is scheduled to meet with the County Planning Board in May. The WLCA Board will monitor the situation and provide an update to you in the future. ❖

WEST LAUREL RECREATION COUNCIL (WLRC)

WEST LAUREL RECREATION COUNCIL NEWS

Despite the drizzle, more than 80 kids showed up for the West Laurel Recreation Council's (WLRC) Annual Egg Hunt on Saturday, April 15. Gary Tharpe, Heidi and Paul Piraino, Barb and Rush Kester, Jean Staats, Chuck Lavin and Donna Harris did a great job setting up and running the event. Special thanks to Betty Mannas who filled 1500 eggs and bought all the prizes! The WLRC would also like to thank the parents who pitched in and helped at the last minute.

The Egg Roll (or Egg Golf Tournament or Egg Lob) was also very popular. Some kids wanted to run every race! Winners of each heat won a bag of jelly beans. Mr. Bunny was on hand to help celebrate the event. He was a big hit with the little kids. Seth Erwin and Mindy Peggins won the "guess the number of candies in the egg" contest. The WLRC hopes everyone had a great time!

Upcoming WLRC events — all taking place at the West Laurel Community Building.

- **Make a Special Gift Box for Mother!**

Tuesday, May 9 from 6:30 to 7:30 PM. (Mother's Day is May 14.) Decorate a lovely box with lace, flowers, etc. Fill the box with special notes for mom. For children 6 - 12 years old (kids 8 and under should have a parent assist them). Cost \$4. Call **Jean Staats at (301) 604-8550** to register.

- **Make a Special Gift for Dad, Grandpa or some special person!** Tuesday, June 13 from 6:30 to 7:30 PM. (Father's Day is June 18.) Build a Wooden Box, paint it with sand paint and decorate with many fascinating seashells! For the surprise inside you will make yummy Wilton chocolates in various "cool" shapes. For ages 6 - 12 (kids 8 and under should have a parent assist them). Cost \$4. Call **Jean Staats at (301) 604-8550** to register.

- **Ice Cream Social.** Friday, June 9 from 7:00 to 8:30 PM. Come to our Family Ice Cream social on the grounds of the West Laurel Community Building. Relax, socialize, watch the children play tag, and get to know the people in your community. Watch the West Laurel column in the *Laurel Leader* for more info.

PLEA FOR HELP!

Please consider joining the WLRC! Help us to continue to bring free or low-cost events to the West Laurel community. The WLRC meets the fourth Tuesday of every month at the West Laurel Community Building from 7:30 to 9:00 PM. Call interim president **Heidi Piraino (301) 490-7504**; treasurer and past president **Chuck Lavin (301) 490-8996**; or secretary **Rush Kester at (301) 490-1310**. Check out the Rec Council's website at www.webtrek.com/md/wlrc/wlrc.html

The next WLRC meeting is Tuesday, May 23 at 7:30 PM in the West Laurel Community Building. We really need more people to join the WLRC to help run and plan events. Please come! ❖



WEST LAUREL HOME PAGE

The West Laurel Home page on the World Wide Web is being continually updated and includes many new features. On the Environmental page there are links for West Nile Virus related sites. The calendar page has dates and times for most West Laurel events. If you have an event to include on the calendar page, please contact Webmaster **Ron Holmberg at 301/604-7598 or holmberg@erols.com**.

The Website also contains a multitude of hotlinks to government, county, and community pages. West Laurel Swim Club and the West Laurel Recreation Council have links or pages on the site. We invite you to take a look at the pages — we welcome your feedback! The URL is <http://www.webtrek.com/md/westlaurel/index.html>. ❖

NEIGHBORHOOD WATCH

NEIGHBORHOOD WATCH NEWS

WELCOMING NEW FACES AND SAYING FAREWELL TO FAMILIAR ONES

The neighborhood watch has a new leader; **Kelly Krause** accepted the lead position in March 2000. John Dollen will remain involved in a support role. Kelly has been involved with the neighborhood watch for some time and she has a criminal justice and education background to boot. Kelly said her main objective is to get crime information to more neighbors. One of her first tasks is to organize area captains (one from each WLCA area). Kelly will also lead a Speed Awareness Day sometime this year. Volunteers are always needed. If you want to help Kelly, please contact her at **(301) 725-8216** or email at krk32@aol.com.

Captain Corso, District VI Assistant Commander, is rotating to a new assignment. Captain Corso has been an outstanding supporter of West Laurel. His proactive approach to community policing has won him the respect of community leaders throughout northern Prince George's County. He will be missed greatly. The WLCA and neighborhood watch wish him the best in his endeavors.



COUNTY POLICE INCREASE PATROLS ON NEIGHBORHOOD STREETS

Corporal Parke Brown has been doing traffic enforcement on Bounds Avenue, Bond Mill Road, and Brooklyn Bridge Road. Many residents have taken notice and have applauded the police efforts to respond to the community's concerns about speeding and public safety. Corporal Brown will be at the May meeting to talk with us about his unique assignment. Prince George's County will provide a brief summary of recent crime in our area and take any questions you may have.

CRIME STATISTICS

West Laurel has experienced a rash of "vandalism" and "theft from auto" since mid-February 2000. Areas that have been affected include Sherwood Avenue (Bond Mill Elementary School), and Supplee Lane. The police have increased patrols but no arrests have been made. The West Laurel Neighborhood Watch met March 16 to discuss crime at the elementary school. School and police officials spoke to two dozen concerned residents regarding efforts to address crime at the school. However, another theft from auto occurred at the school a week later, which illustrated that the crimes at the school were not random as officials believed. The following is a summary of reported crime in the area since February 2000:❖

Date	Street	Crime
02/02/00	5900 Maple Terrace La.	Theft
02/04/00	5800 Sandy Spring Rd.	Theft
02/05/00	15600 Bradford Dr.	Vandalism to Auto
02/10/00	16000 Sherwood Ave.	B&E Commercial
02/11/00	16000 Sherwood Ave.	Vandalism to Auto
02/11/00	16000 Sherwood Ave.	Theft From Auto
02/11/00	16000 Sherwood Ave.	Vandalism to Auto
02/11/00	16000 Sherwood Ave.	Vandalism to Auto
02/16/00	15600 Bradford Dr.	Suspicious Vehicle
03/08/00	6400 Park Hall Dr.	Vandalism
03/16/00	Brooklyn Bridge Ct.	B&E Residential
03/16/00	15150 Sweitzer La.	Vandalism
03/22/00	16000 Sherwood Dr.	Theft from Auto
04/03/00	Supplee La.	Theft from Auto and Vandalism
04/04/00	6400 Orly Lane	Vandalism to Auto
04/06/00	6400 Orly Lane	Vandalism to Auto
04/05/00	5800 Parkway Drive	Residential Robbery
04/07/00	Brooklyn Br. Road/Bond Mill Rd	Warrant Service
04/20/00	5700 Sandy Spring Road	Residential Breaking and Entering

BOARD ELECTIONS

ELECTION OF WLCA BOARD MEMBERS 2000-2001

The officers and reps listed in bold print will be voted on during the Spring General Meeting.

Officers

- President John Dollen
- 1st Vice President Tom Dernoga
- 2nd Vice President **Barbara Sollner-Webb**
- Rec Secretary Mary Lehman
- Treasurer Laurice Crawford

Area I Reps

- Rep (2 Year) **Jurgen von Bredow**
- Rep (1 Year) Vacant
- Alternate Jim Ludlam

Area II Reps

- Rep (2 Year) **Justin Chappell**
- Rep (1 Year) Bill Ferguson
- Alternate **Ricard Weiblinger**

Area III Reps

- Rep (2 Year) **Howard Rosenberg**
- Rep (1 Year) Ronald Holmberg
- Alternate Gordon Anderson

Area IV Reps

- Rep (2 Year) **Irene D'Amato**
- Rep (1 Year) Lucy Grimes
- Alternate **Barney Walsh**

Area V Reps

- Rep (2 Year) **Meg Truman**
- Rep (1 Year) Bob Kline
- Alternate Carol Bounds

Committee Chairmen

- Zoning Tom Dernoga
- ICC Barbara Sollner-Webb
- Environmental Justin Chappell
- Hotline Ron Holmberg

*Still looking for nominations to fill vacant slots. If interested, please contact **Laurice Crawford** at (301) **490-8684**. Nominations will be accepted from the floor at the May 18 General Meeting. ❖

COMMUNITY NEWS

BALLFIELDS FOR LAUREL BOYS & GIRLS CLUB

Little has changed since February in the search for fields for the Laurel Boys & Girls Club (LB&GC). However, the WLCA has been aggressive in helping the LB&GC to move closer to its goal.


The WLCA Board has designated three of its members (Tom Dernoga, Barbara Sollner-Webb, and Justin Chappell) to assist the LB&GC in exploring its options. The Board is also looking for a resident from the Brooklyn Bridge Road area to join them.

Councilman Maloney has told us that Laura Kinch of Parks & Planning said additional fields and parking would likely be added at Fairland Regional Park. LB&GC representative Ron Atkinson has also told us that Caleb Gould has been contacted regarding use of the land near Van Dusen and I-95.

While no clear solutions have been found, the WLCA Board is currently tracking this issue. For more information, contact **John Dollen** at (301) **725.3202**. ❖

THE WEST LAUREL SWIM CLUB

Join the West Laurel Swim Club on Brooklyn Bridge Road! Notice the clean, clear water? It's not too late to join the West Laurel Swim Club before the pool season begins! Anyone can join! Call **Betty Mannas (301-725-2034)** for more information. Or check out the web page at <http://www.webtrek.com/md/westlaurel/wlsc.htm>. The swim team will begin in May and is only open to West Laurel swim club members. More information on the West Laurel Web site. Please note: The West Laurel Swim Club is not affiliated with either the WLRC or WLCA. ❖



TEEN SERVICE DIRECTORY

HELP OUR TEENS

Help a teenager learn responsibility and be productive, all while earning money. The WLCA has received parental approval to make the following names and phone numbers available.

Names left out for web version.

If you have a teenager interested in providing services in the neighborhood, call **WLCA President John Dollen (301) 725-3202**. The next directory will be published in the Fall of 2000. ❖



PROPOSED BY-LAWS AMENDMENT

The WLCA Board has been reviewing the By-Laws with the intent of proposing a comprehensive update. The present By-Laws were drafted in 1984, and two provisions have been added by amendment. While the comprehensive revision is not ready, the WLCA Board has voted to approve a third amendment, which the membership must vote on at the Spring Meeting. The By-Laws review identified that the position of "Alternate" Board member had arisen as a matter of practice, but is not authorized under the By-Laws and there is no provision for election of "Alternates." The WLCA Board recommends the following amendment:

4.01 The Association Officers shall consist of a President, First Vice President, Second Vice President, Secretary and Treasurer who shall be elected by a majority of the votes cast at the spring meeting. There shall be two area directors (and one or more Alternate area directors) elected from each area defined in Section 6.01 by vote of the voting members residing in such area. The Second Vice President, with the approval of the Board of Directors, shall appoint a nominating committee consisting of at least three voting members. The nominating committee shall solicit candidates for each office.

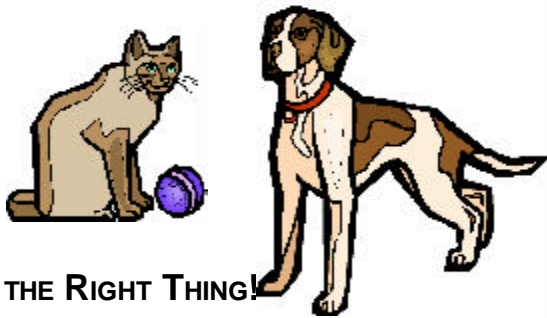
6.01 The Board shall be comprised of 2 directors (and one or more Alternate directors) from each of the five geographic areas described in Attachment A to these By-laws.

6.06 Alternate area directors may vote on motions before the Board only if at least one of the two area directors is not present at the Board meeting. ❖

USEFUL PHONE NUMBERS

EMERGENCY NUMBERS

- Emergency 911
- Police (Laurel/Beltsville) (301)937-0910
- Fire Department (301)776-3600
- Laurel Rescue Squad (301)725-3345
- WSSC (301)206-8000
- Poison Control Center 1-(800)492-2414



DO THE RIGHT THING!

Now that warm weather is here, it's a good time to review some good community etiquette.

- People who walk pets should always remember to clean up after the pet. Please don't leave a mess for someone else to clean up or discover.
- If you walk your dog on the ballfields, please use the perimeter or pickup after the pet. This includes any open areas that people use for recreation (e.g., Panther Field, Supplee Field, T. Howard Duckett Park, and the neighborhood park on Bradford). If you take your dog there, please don't leave a mess for a child to step in during a game of soccer or field hockey. We all need to be aware of each other and help ensure that the open spaces and parks are kept clean, safe, and convenient for everyone to use.
- Please keep your pet on a leash when you take it off your property (there is a leash law in Prince George's County [Sec 3-135]). If an animal is running free without a leash, and if a person is not in pursuit of an escaped animal, the animal control warden or a police officer can impound the animal (note: this applies to both dogs and cats).

Thank you! ❖

- Information & Referral (301) 350-9700
- Animal Control (301)499-8300
- Fairland Rec Center (301)953-0030
- Fairland Ice Rink (301)953-0100
- Fairland Aquatic Center (301)206-2359
- West Laurel Swim Club (301)725-2034
- Leaf & Snow Removal (301)350-0500
- Recycling (301)952-7630
- School Bus Lot (Our area) (301)497-3665
- Litter Pickup, Mowing, Street
- Trees, Leaf, Snow Removal .. (301)499-8520
- Bulky Trash Pickup (301)952-7600
- Zoning Enforcement (301)883-6130
- Housing Enforcement (301)883-6100

Deerfield Run Community Center(301)953-7882

(For reservations or information regarding events at the West Laurel Community Center, ask for Deedee Sisson)

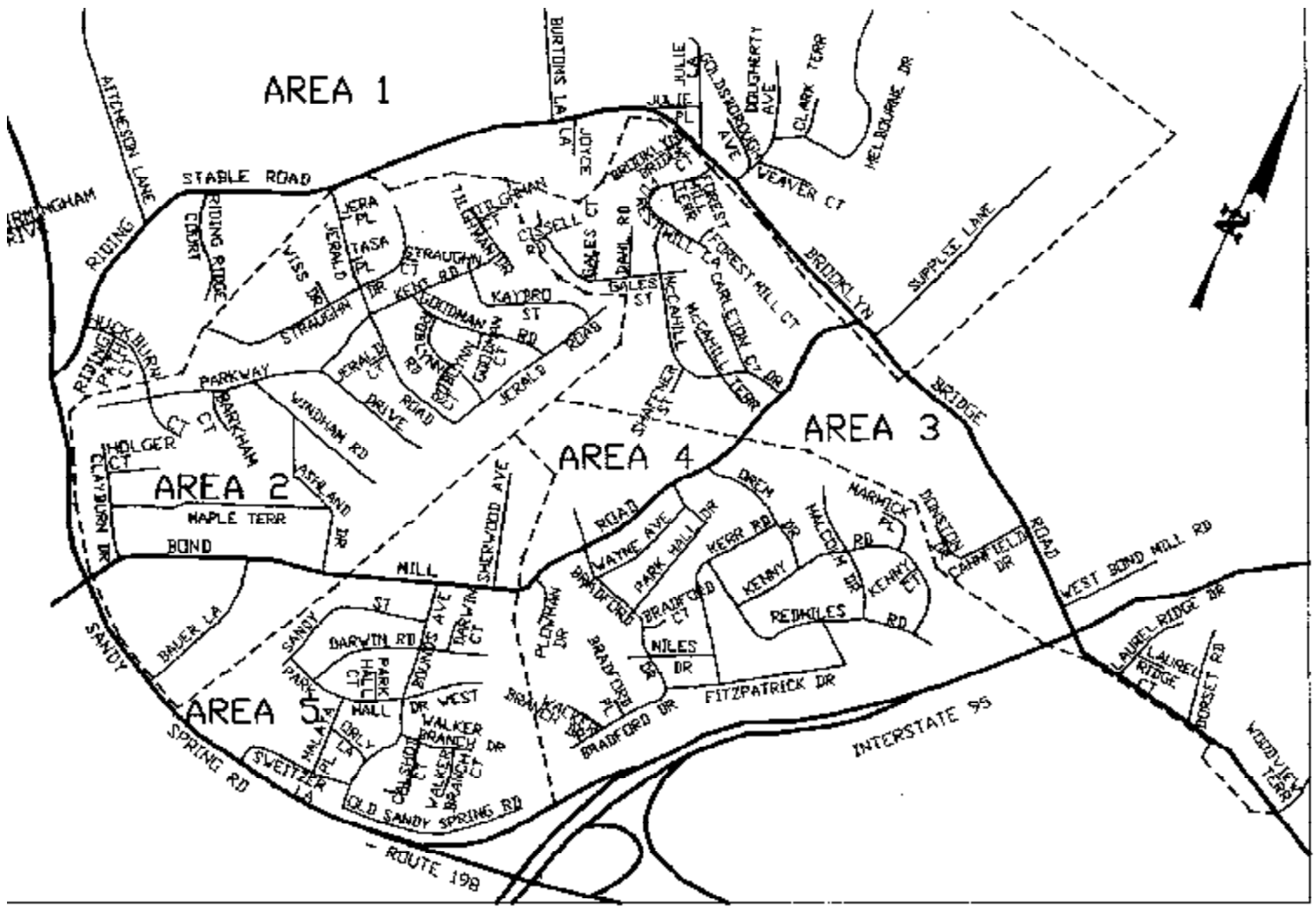
County Councilman's Office (301)952-3887
 Councilman Mike Maloney
 Andy Eppleman (Assistant)

(Call this office to request action on local and/or county-wide problems; to get information; or to pass on a compliment)❖



HOTLINE CONTRIBUTORS

Many thanks to those who contributed to this issue of *HOTLINE*:
 Gordon Anderson, Carol Bounds, Justin Chappell, Laurice Crawford, Tom Dernoga, John and Cindy Dollen, Ron Holmberg, Heidi Piraino, Art Thatcher, and Juergen von Bredow. ❖



The Newsletter of the West Laurel Civic Association

HOTLINE — Spring 2000

West Laurel Civic Association
 P.O. Box 449
 Laurel, MD 20725

Bulk Rate
 Postage Paid
 Permit #3505
 Laurel, MD 20725